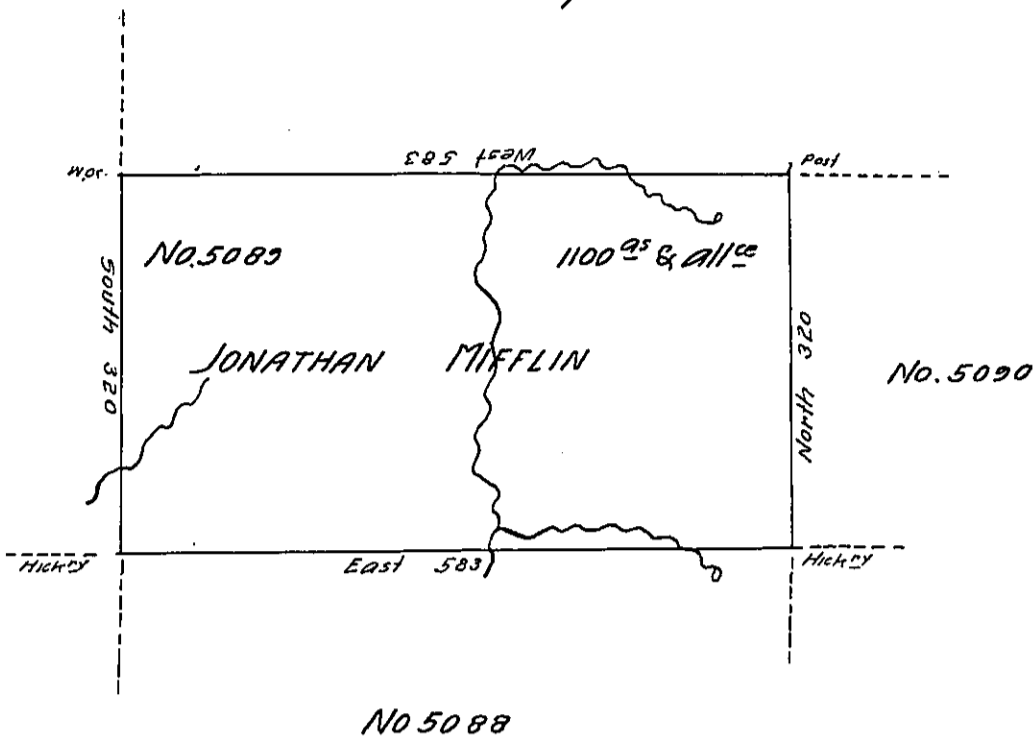


Old Surveys



In pursuance of a Warrant dated 4<sup>th</sup> February 1794  
 No. 5089, surveyed November 26<sup>th</sup> 1794 to Jonathan Mifflin the  
 above described tract of Land situated on the North side of  
 Sandy Lick Creek in the Late Purchase Northumberland County in  
 District No. 6 Containing Eleven hundred acres and allowance  
 of six p. Cent & ce.

pr. Jno. Brodhead D.S.

Daniel Brodhead Esquire  
 Surveyor General

IN TESTIMONY that the above is a copy of the original remaining on file in  
 the Department of Internal Affairs of Pennsylvania, made  
 conformably to an Act of Assembly approved the 16th day of  
 February, 1833, I have hereunto set my Hand and caused  
 the Seal of said Department to be affixed at Harrisburg,  
 this twenty sixth day of December 1905

*Joseph P. Brown*  
 Secretary of Internal Affairs.